

Series **82D40-2/82D63-5** Product Overview

Features:

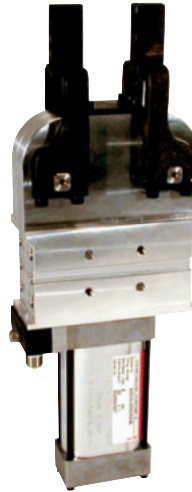
- Compact, enclosed design
- Narrow design
- Adapts to various holding arm variants
- High accuracy of positioning due to internal holding arm stopper
- 2 lateral and 1 front mounting areas
- Low weight (aluminium body)
- Integrated inductive sensing module with LED display
- Cylinder diameter 40 mm or 64 mm

Application:

- Clamping, holding, gripping and positioning of metal sheets and other parts, mainly in jigs and handling systems.

Key areas of application:

- Automotive manufacturing, sheet processing industry, jig and general mechanical engineering.



- Automation power clamps, enclosed and narrow design for 2 clamping arms

Models: **82D40-2...**
82D63-5...

82D40-223C900
Base model with
2 U-clamping arms

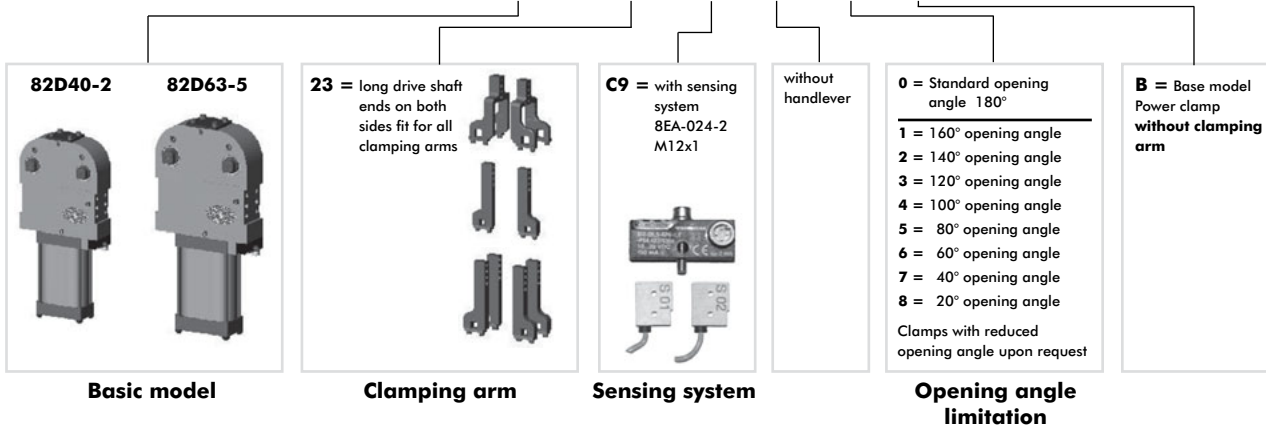
Series **82D40-2/82D63-5** Technical Information

Model	Clamping position	Standard opening angle	Driveshaft	Max. holding torque Nm [lb ft]	Clamping torque at 5 bar Nm [lb ft]	Cylinder Ø mm [in]	Air consumption per double stroke at 5 bar dm ³ [ft ³]	Weight ~ kg [lbs]
82D40-223C900B	vertical	180°	lateral, both sides U-type clamping arms	55 [40]	55 [40]	40 [1.57]	1,2 [0.04]	2,5 [5.50]
82D63-523C900B	vertical	180°	lateral, both sides U-type clamping arms	120 [88]	120 [88]	63 [2.48]	3,8 [0.13]	4,5 [9.90]

Model	B1	B2	B3	L1	SW	G
82D40-223C900B	30	30	60	12,5	11	1/4
82D63-523C900B	47	47	94	21	19	1/4

Order no. code for **82D40/63**

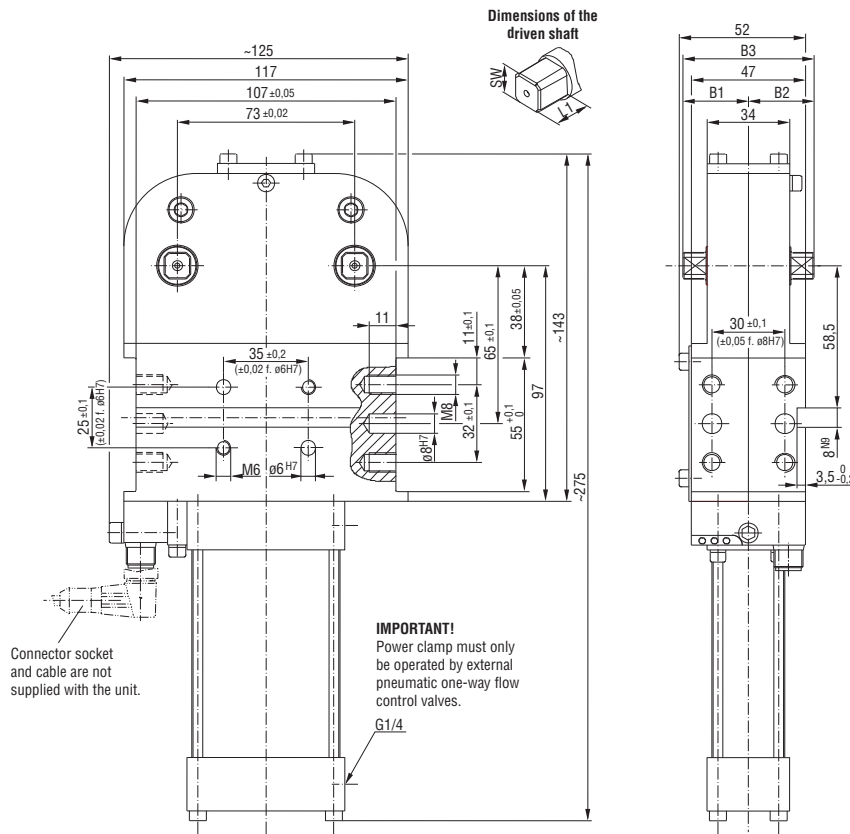
Example Order No.: **82D63-5 23 C9 0 0 B**



Series **82D40-2/82D63-5** Standard Clamp Dimensions

Automation power clamps with 2 clamping arms

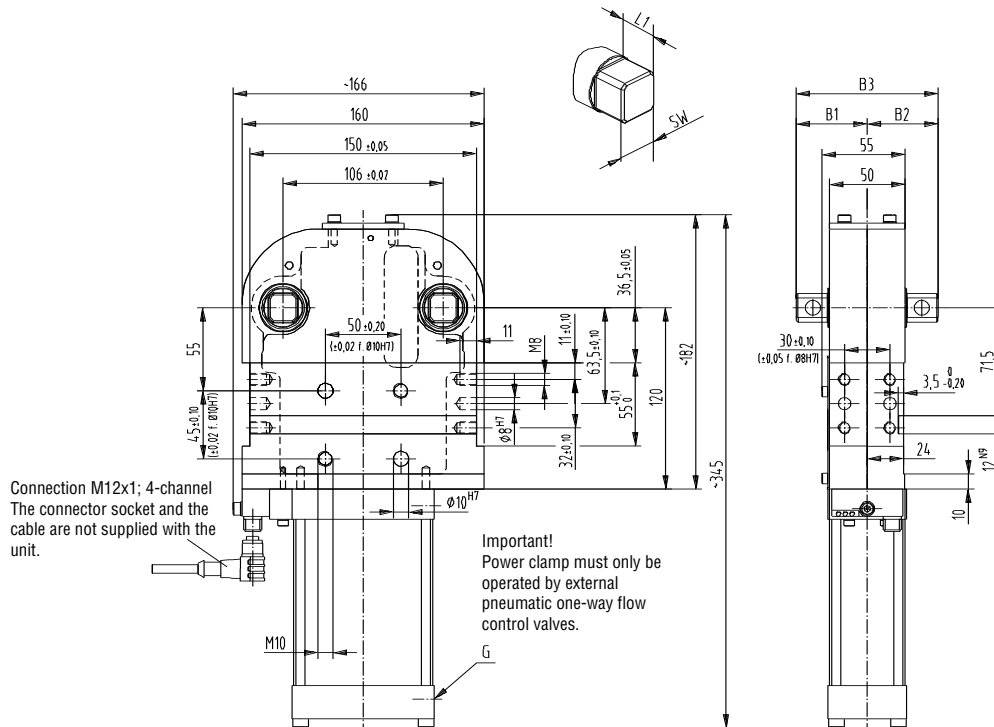
82D40-223C900B



Safety notice:
The load on the clamping arms must always point towards the clamping direction. Single load of one arm is prohibited

Medium: air, max. 6 bar, operation with oil-free air is permissible

82D63-523C900B



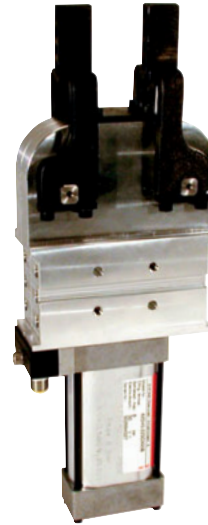
Safety notice:
The load on the clamping arms must always point towards the clamping direction. Single load of one arm is prohibited

Medium: air, max. 6 bar, operation with oil-free air is permissible

Series **82D40-2** Technical Information, Dimensions
Automation power clamps with 2 clamping arms

• Clamping arm variants for **82D40-2**

Clamping arm variant U-type central clamping arm



Base model with 2 U-type clamping arms, small gap between clamping arms

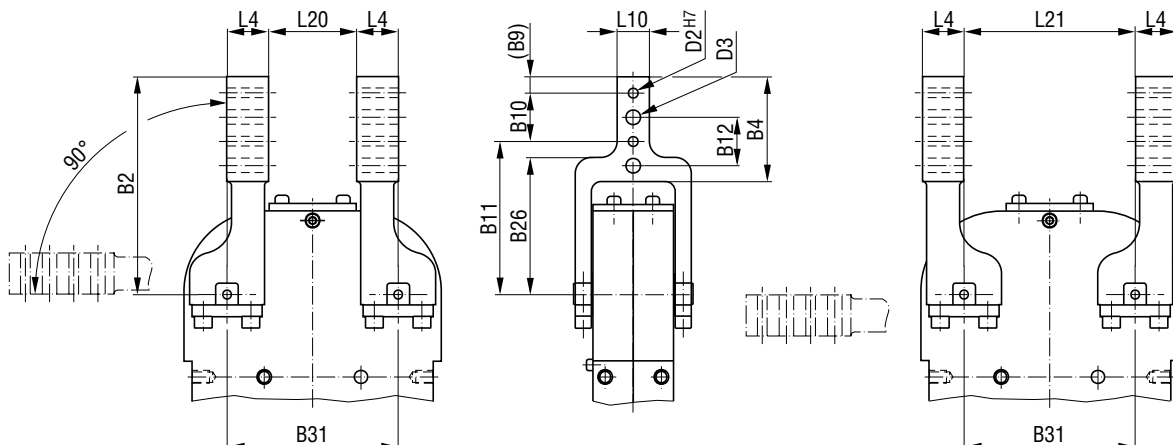
U-type central clamping arm Technical Information

Model	Order no. for U-type clamping arm set (1 clamping arm)	Clamping position	Standard opening angle	B2	B4	B9	B10	B11	B12	B26
82D40-223C900B	8JG-065-2-01	vertical	180°	105	45,3	6	±0,02	+0,1	±0,2	68,2

Model	Order no. for U-type clamping arm set (1 clamping arm)	B31	D2	D3	L4	L10	L20	L21
82D40-223C900B	8JG-065-2-01	±0,02	H7 ∅	∅		-0,1		
82D40-223C900B	8JG-065-2-01	73	6	7	20	12	33	73

Drawing shows standard mounting (L20)

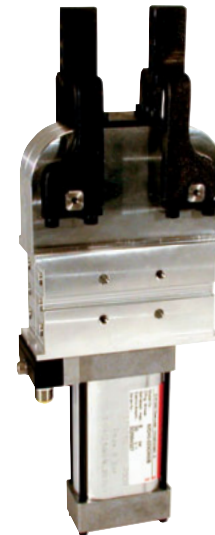
Drawing shows further mounting possibility (L21)



Series **82D63-5** Technical Information, Dimensions

Automation power clamps with 2 clamping arms

- Clamping arm variants for **82D63-5**
Clamping arm variant U-type central clamping arm



Base model with 2 U-type clamping arms, small gap between clamping arms

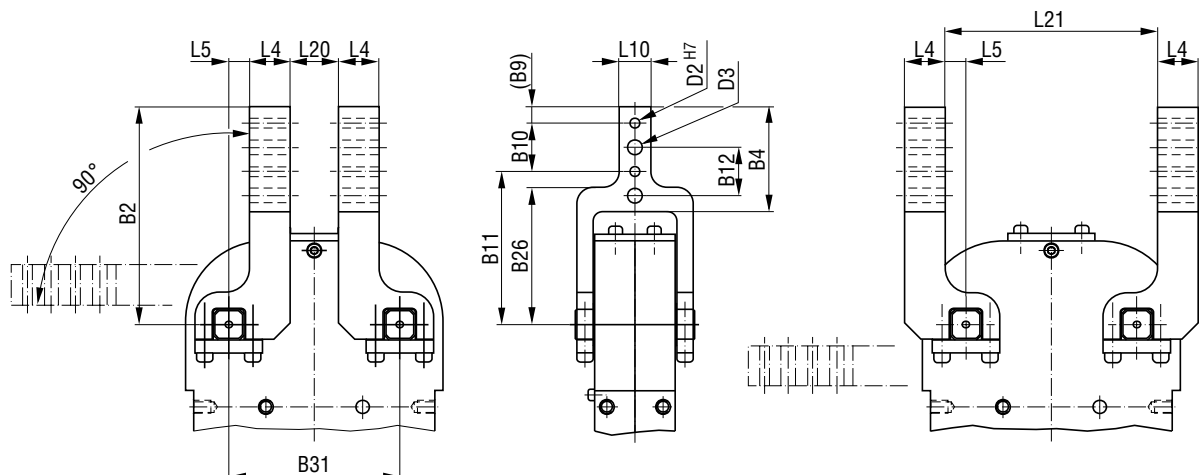
U-type central clamping arms Technical Information

Model	Order no. for U-type clamping arm set (1 clamping arm)	Clamping position	Standard opening angle	B2	B4	B9	B10	B11	B12	B26
82D63-523C900B	8JG-069-1-01	vertical	180°	144	64,3	9	±0,02	+0,1	±0,2	95

Model	Order no. for U-type clamping arm set (1 clamping arm)	B31	D2	D3	L4	L5	L10	L20	L21
82D63-523C900B	8JG-069-1-01	±0,02	H7 ∅	∅	28	15	-0,1	20	136

Drawing shows standard mounting (L20)

Drawing shows further mounting possibility (L21)

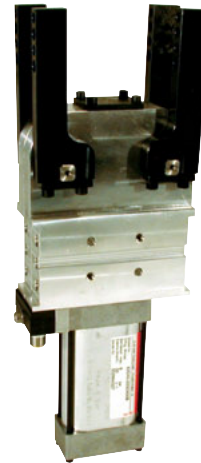


Series **82D40-2** Technical Information, Dimensions
Automation power clamps with 2 clamping arms

• Clamping arm variants for **82D40-2**

Clamping arm variant

- Lateral clamping arm left
- Lateral clamping arm right
- Lateral clamping arm both sides



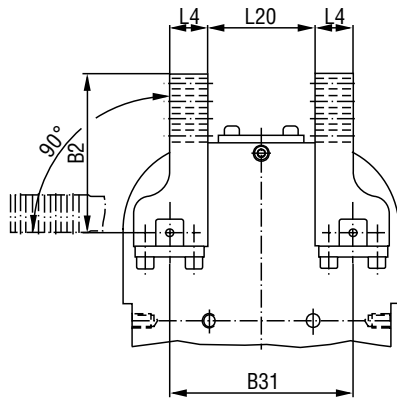
Base model with 4 lateral clamping arms, large gap between clamping arms

Lateral clamping arm Technical Information

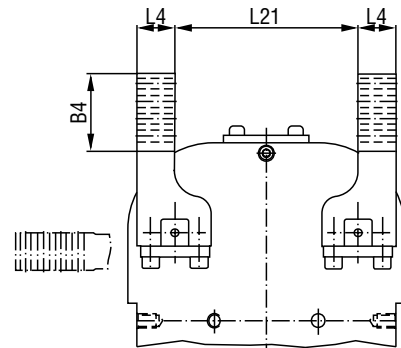
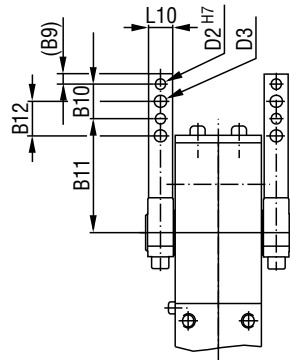
Model	Clamping arm variant	Order no. for 1 set of lateral clamping arms (1 clamping arm)	Clamping position	Standard opening angle	B2	B4	B9	B10	B11	B12
82D40-223C900B	lateral, left lateral, right lateral, both sides	8JG-066-1-01	vertical	180°	105	45	6	±0,02	+0,1	±0,2

Model	Clamping arm variant	Order no. for 1 set of lateral clamping arms (1 clamping arm)	B31	D2	D3	L4	L10	L20	L21
82D40-223C900B	lateral, left lateral, right lateral, both sides	8JG-066-1-01	±0,02	H7 ∅	∅		-0,1		
			73	6	7	20	12	33	73

Drawing shows standard mounting (L20) with four lateral clamp arms



Drawing shows further mounting possibility (L21)



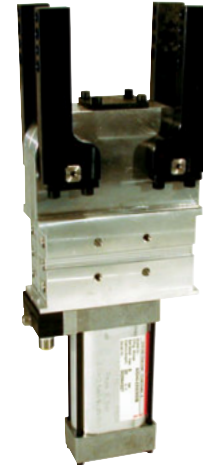
Series **82D63-5** Technical Information, Dimensions

Automation power clamps with 2 clamping arms

• Clamping arm variants for **82D63-5**

Clamping arm variant

- Lateral clamping arm left
- Lateral clamping arm right
- Lateral clamping arm both sides



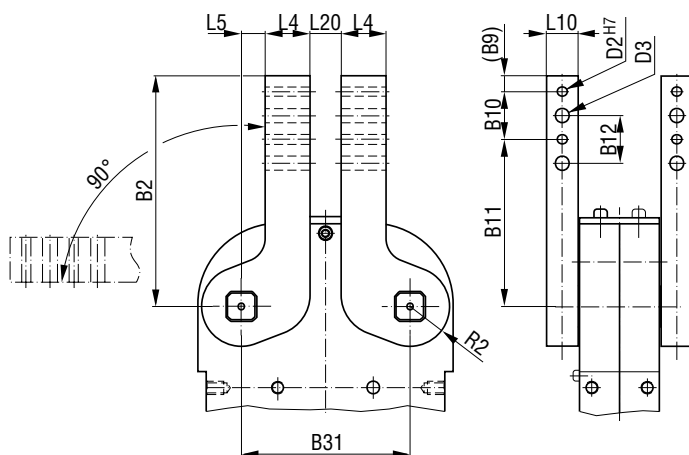
Base model with 4 lateral clamping arms, large gap between clamping arms

Lateral clamping arms Technical Information

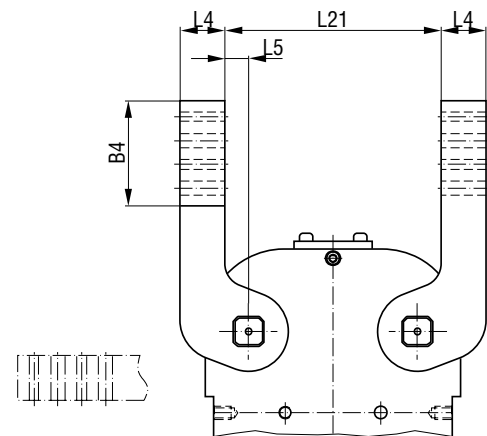
Model	Clamping arm variant	Order no. for 1 set of lateral clamping arms (1 clamping arm)	Clamping position	Standard opening angle	B2	B4	B9	B10	B11	B12	
82D63-523C900B	lateral, left lateral, right lateral, both sides	8JG-070-1-01	vertical	180°	144	74	9	30	±0,02	+0,1	±0,2

Model	Clamping arm variant	Order no. for 1 set of lateral clamping arms (1 clamping arm)	B31	D2	D3	L4	L5	L10	L20	L21	R2
82D63-523C900B	lateral, left lateral, right lateral, both sides	8JG-070-1-01	±0,02	H7 Ø	Ø			-0,1			
82D63-523C900B	lateral, left lateral, right lateral, both sides	8JG-070-1-01	106	6	9	28	15	20	20	136	28

Drawing shows standard mounting (L20) with four lateral clamp arms



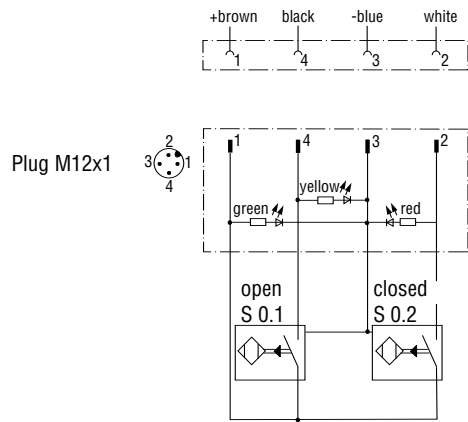
Drawing shows further mounting possibility (L21)



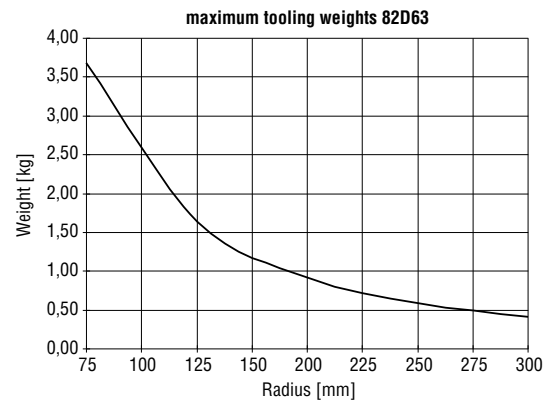
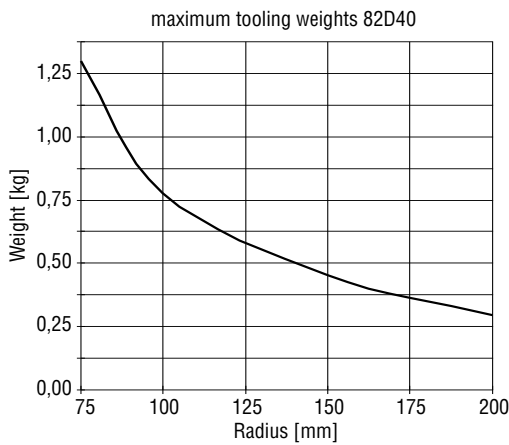
Series **82D40-2/82D63-5** Technical Information

Wiring diagram of electrical sensing system

Sensing system immune to interference from d.c. arc welding and a.c. arc welding



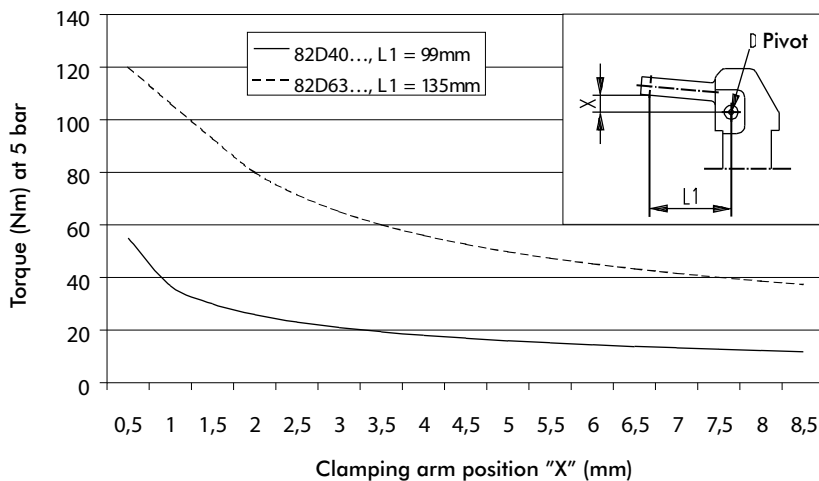
Concept guideline (with reference to axis of clamping arm rotation)



All details apply under an air pressure of 6 bar and opening and closure times of 1 second each

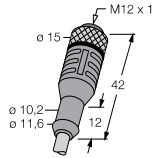
Diagram of clamping force (at 5 bar)

Models 82D40... / 63...

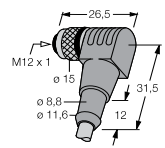


Series 82D40-2 / 82D63-5 Accessories

Clamping Arms		Order no. for Structural component		Comment
Clamping are variant	Clamping position	82D40-223C900B	82D63-523C900B	
U-central	vertical	8JG-065-1-01	8JG-069-1-01	sets of U-type clamping arms consist of clamping arm, links and screws
lateral right/left	vertical	8JG-066-1-01¹⁾	8JG-070-1-01²⁾	sets of lateral clamping arms consist of 1) clamping arm, links and screws 2) clamping arm and set screws you need 2 sets of clamping arms
lateral both sides	vertical	8JG-066-1-01¹⁾	8JG-070-1-01²⁾	you need 4 sets of clamping arms



Connector socket M12x1 straight, 5-pin



Connector socket M12x1 angular, 4-pin

Connector Cable (includes 1 connector socket & 5 m cable)	Order no. for Structural component	
	82D40-223C900	82D63-523C900
Connector socket M12x1 straight, 5-pin	8EL-002-1	8EL-002-1
Connector socket M12x1 angular, 4-pin	8EL-003-1	8EL-003-1

Opening Angle Limiter	Order no. for Structural component			
	82D40-223C900		82D63-523C900	
Angle	Length	Order No.	Length	Order No.
180° (Standard)	11,4mm	8CE-342-1	14,4mm	8CE-362-1
160°	15,1mm	8CE-340-1	20,0mm	8CE-360-1
140°	18,5mm	8CE-338-1	24,8mm	8CE-358-1
120°	22,2mm	8CE-336-1	29,6mm	8CE-356-1
100°	25,8mm	8CE-334-1	34,3mm	8CE-354-1
80°	28,0mm	8CE-332-1	39,0mm	8CE-352-1
60°	33,0mm	8CE-330-1	43,8mm	8CE-350-1
40°	37,0mm	8CE-328-1	49,1mm	8CE-348-1
20°	41,8mm	8CE-326-1	56,2mm	8CE-346-1

Shim Plates (for clamping arm)	Fit for model 82D40-2									Fit for model 82D63-5								
	Model	A1	A2	D2	D3	B9	B10	B12	L10	Model	A1	A2	D2	D3	B9	B10	B12	L10
	82ZB-SH4001	0,1								82ZB-SH5001	0,1							
	82ZB-SH4002	0,2								82ZB-SH5002	0,2							
	82ZB-SH4005	0,5								82ZB-SH5005	0,5							
	82ZB-SH4010	1,0	6,5	7	6	20	20	12		82ZB-SH5010	1,0	6,5	9	10	30	30	16	
	82ZB-SH4020	2,0								82ZB-SH5020	2,0							
	82ZB-SH4050	5,0								82ZB-SH5050	5,0							

Spare Parts	Order no. for Structural component	
	82D40-2	82D63-5
Cylinder	8PW-016-1	8PW-024-2
Seal kit	8PW-016-1-00	8PW-024-1-00
Integrated sensing system C9 Connector plug M12x1	8EA-024-2	8EA-024-2